



EDISON ENERGY RESCUE

FLAME RETARDANT LIGHTING BOX

2 WAY LIGHTING BOX | E27 THERMOPLASTIC LAMPHOLDER



MAIN FEATURES

- > SUPER STRONG
- > ROBUST
- > FLAME RETARDANT
- > THERMOPLASTIC
- > E27 LAMP
- > RECYCLABLE
- > LED COMPATIBLE

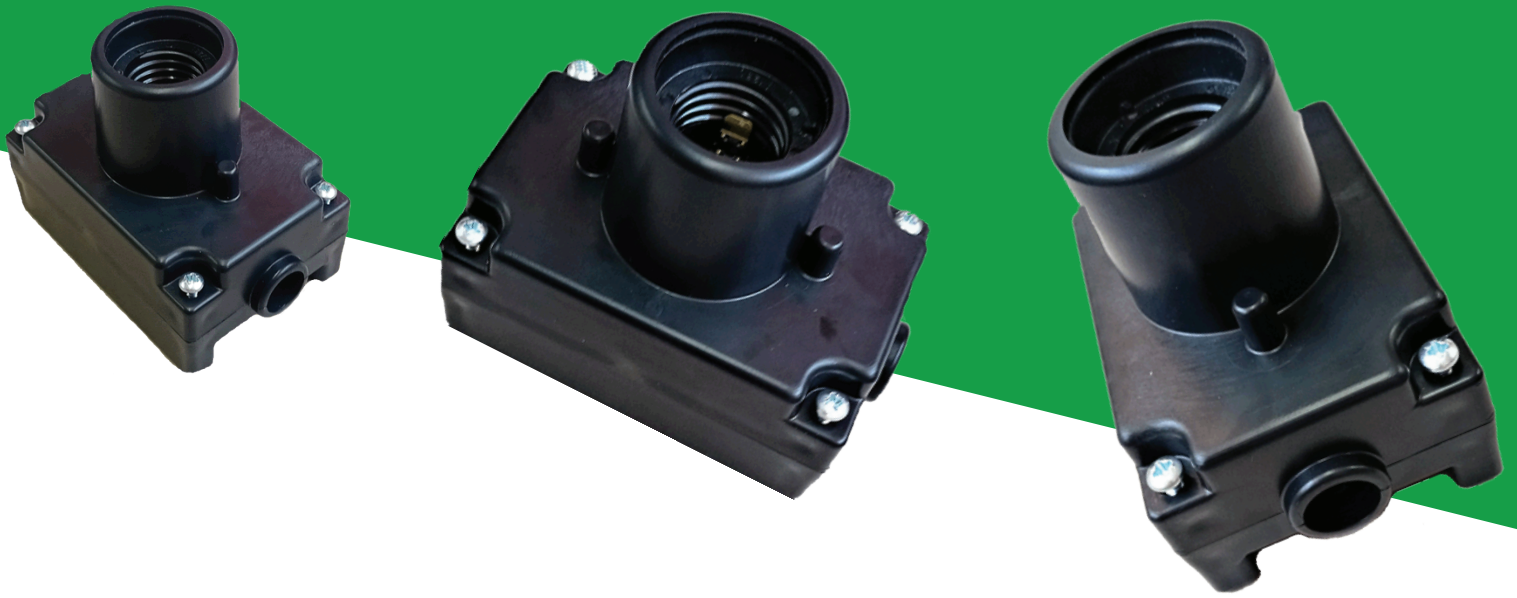
Flame retardant ABS Plastic 2 Way Lighting Box c/w
E27 Thermoplastic Lampholder

Manufactured in high quality flame retardant & self-extinguishing ABS plastic. ABS Plastic is a strong, light weight, flame retardant Super Plastic which is Lead, Cadmium & Mercury free and complies with ROHS Directive 2002/95/EC



100% LOCALLY DESIGNED & MANUFACTURED IN SOUTH AFRICA





SPECIFICATIONS

Body

Material Flame Retardant Acrylonitrile Butadiene Styrene (FRABS)
Lead, Cadmium & Mercury Free in Compliance with ROHS 2
002/95/EC & IEC 62321:2008

Impact Strength 9.2KJ/m²

Impact Test Type CHARPY Test

Dimensions (mm) L = 120mm
W = 75mm
H = 93.2mm

Lampholder

Type E27

Material Flame Retardant Thermoplastic (IEC 60695-2-2)

Certifications ENEC 03
ISO
IEC 60695-2-2

Terminals Push-in twin terminals: 0.5-2.5mm²

CERTIFICATIONS

- Needle flame test and glow wire test at 650°C



LED COMPATIBLE LAMPS

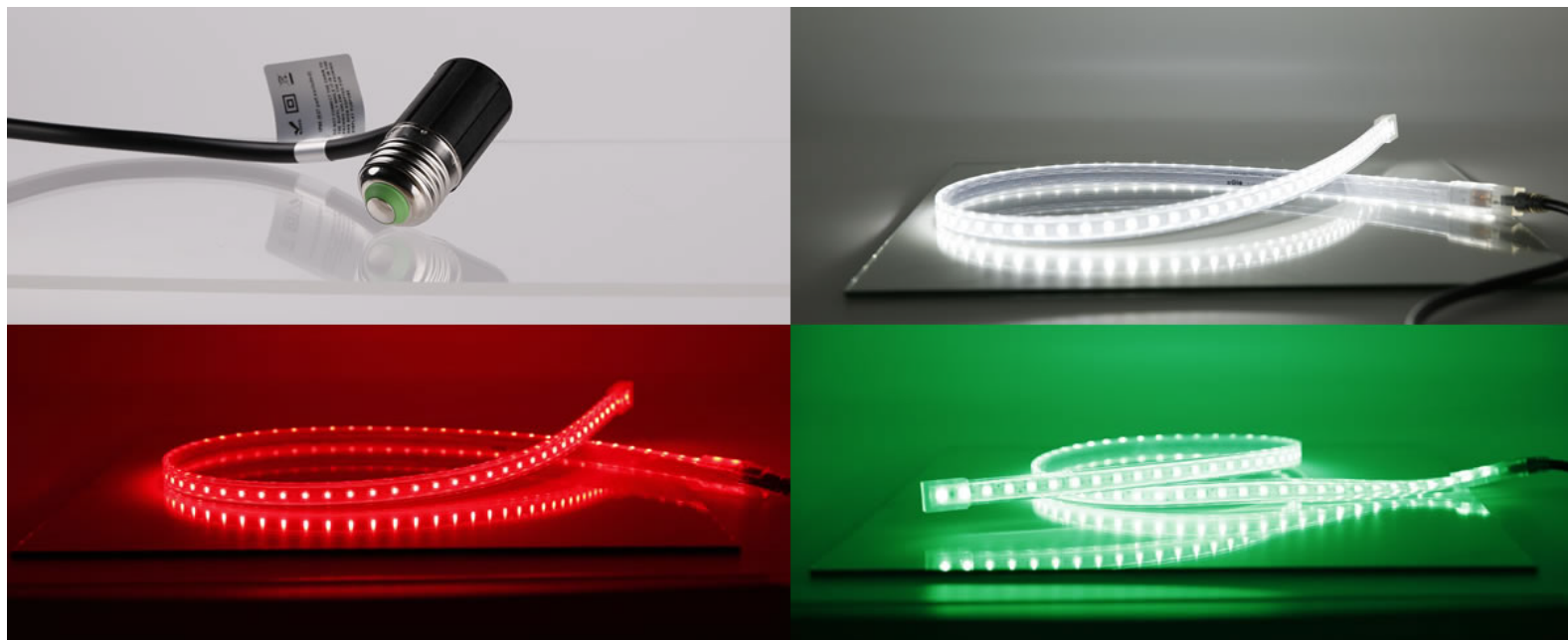
SUPER BRIGHT HIGH POWER LED LAMP



These super bright high power LED lamps emit light instantly with low energy consumption. They are an energy-efficient alternative for high wattage energy savers, mercury vapour and HPS lamps, making this ideal for warehouses, shopping malls, hotels, theatres and underground use on the lightboxes. Available in various wattages.

LED STRIPS - CLASS II - IP65

We also supply these LED strips compatible with the lighting box. Available in white, red and green with an E27 connecting cap.



LED Configuration | 72 LED's spaced evenly over a metre length.

Length | 1 Metre

Fixing Height | 2-3 Metres

Power Consumption | 14 Watts per metre

Lumens | 900 per metre

Protection | Short Circuit, Over Voltage, Over Temp and Over Current



EDISON ENERGY RESCUE
FLAME RETARDANT LIGHTING BOX

Tel: 011 472 9500
Fax: 011 472 9506
www.edisonlebone.co.za

sales@edisonlebone.co.za
mines@edisonlebone.co.za



**EDISON
LEBONE**